



AP Drawing Portfolio

Liliana Meliezer

8Z3Z532U

2024

Written Evidence

Sustained Investigation

Identify the inquiry that guided your sustained investigation.

Response:

How can I highlight the positive aspects of my and others' experiences with girlhood, using digital portraiture that captures pivotal moments in life to convey meaning? In certain elements of the media, it is common to see the negative aspects and hardships of girlhood emphasized. Through my works, I pursued a series that shows my personal positives toward the subject. I translated the intense feelings behind moments a girl experiences in her lifetime, using a medium as uniquely contemporary as digital art to synthesize an introspective display of artistry.

Describe ways your sustained investigation developed through practice, experimentation, and revision.

Response:

Using bright and warm colors with the smooth Flat Square brush in the Jingsketch Basics brush set, I continually revised moments of vivid emotional imagery to allude to a sense of joy. I experimented in using the 6B pencil default brush to mimic youthful mark making and counteract the realism of the pieces by altering the textures of the subjects. The concept of art is a limitless conversation; we ask questions of others or share a story using art. Creating a set of works highlighting such a passionately diverse yet equivocal narrative such as girlhood has introduced my unique voice.



Image 1

Sustained Investigation

Height: 18

Width: 24

Depth: 0

Materials:

iPad, Apple Pencil, Procreate Drawing Program

Process(es):

Usage of complementary colors on a blissful expression encapsulate a budding passion for caretaking.

Citation(s): N/A



Image 2

Sustained Investigation

Height: N/A

Width: N/A

Depth: N/A

Materials:

iPad, Apple Pencil, Procreate Drawing Program

Process(es):

Layered colors for process by working general to specific and emphasizing texture of fabric.

Citation(s): N/A



Image 3

Sustained Investigation

Height: 18

Width: 24

Depth: 0

Materials:

iPad, Apple Pencil, Procreate Drawing Program

Process(es):

Reduced value of facial features to draw
focus on the emotional aspect of a girl
trying cosmetics.

Citation(s): N/A



Image 4

Sustained Investigation

Height: N/A

Width: N/A

Depth: N/A

Materials:

iPad, Apple Pencil, Procreate Drawing Program

Process(es):

Speckled texture to imitate light reflection on eyelids parallels added pencil textures on skin.

Citation(s): N/A



Image 5

Sustained Investigation

Height: 18

Width: 24

Depth: 0

Materials:

iPad, Apple Pencil, Procreate Drawing Program

Process(es):

Blended values and warm color selections show a girl's unique way of finding joy in loving another.

Citation(s): N/A



Image 6

Sustained Investigation

Height: N/A

Width: N/A

Depth: N/A

Materials:

iPad, Apple Pencil, Procreate Drawing Program

Process(es):

Figures' placement in space of the composition highlights proximity and shadow draws focus on faces.

Citation(s): N/A

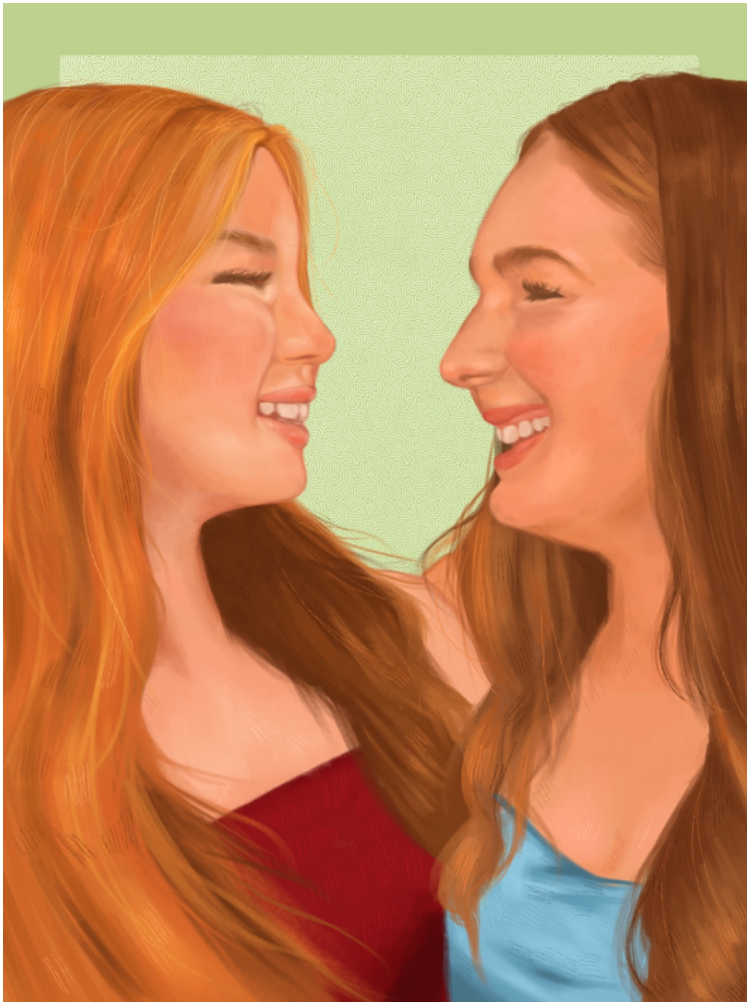


Image 7

Sustained Investigation

Height: 18

Width: 24

Depth: 0

Materials:

iPad, Apple Pencil, Procreate Drawing Program

Process(es):

Used bright colors around lips to highlight smiles, portraying joyful moment of girls' friendship.

Citation(s): N/A



Image 8

Sustained Investigation

Height: N/A

Width: N/A

Depth: N/A

Materials:

iPad, Apple Pencil, Procreate Drawing Program

Process(es):

Close placement of figures in space renders parallels between them through color and texture.

Citation(s): N/A



Image 9

Sustained Investigation

Height: 18

Width: 24

Depth: 0

Materials:

iPad, Apple Pencil, Procreate Drawing Program

Process(es):

Soft errant lines with consistent framing of pieces to display the joy of achievement.

Citation(s): N/A



Image 10

Sustained Investigation

Height: N/A

Width: N/A

Depth: N/A

Materials:

iPad, Apple Pencil, Procreate Drawing Program

Process(es):

Revised a developing style of color and line weight with the repetition of subject over time.

Citation(s): N/A



Image 11

Sustained Investigation

Height: 18

Width: 24

Depth: 0

Materials:

iPad, Apple Pencil, Procreate Drawing Program

Process(es):

Shows the transcendent relationship of mother and child via soft rendering to allude to femininity.

Citation(s):

Bannister, Constance. "Mother holding sleeping baby." 11 November 2009.



Image 12

Sustained Investigation

Height: N/A

Width: N/A

Depth: N/A

Materials:

iPad, Apple Pencil, Procreate Drawing Program

Process(es):

Saturated colors on lips of mother, experimenting in perspective to emphasize the figure's embrace.

Citation(s):

Bannister, Constance. "Mother holding sleeping baby." 11 November 2009.



Image 13

Sustained Investigation

Height: 18

Width: 24

Depth: 0

Materials:

iPad, Apple Pencil, Procreate Drawing Program

Process(es):

Layered an observant perspective with vital emotional connection to hobbies and growth.

Citation(s): N/A

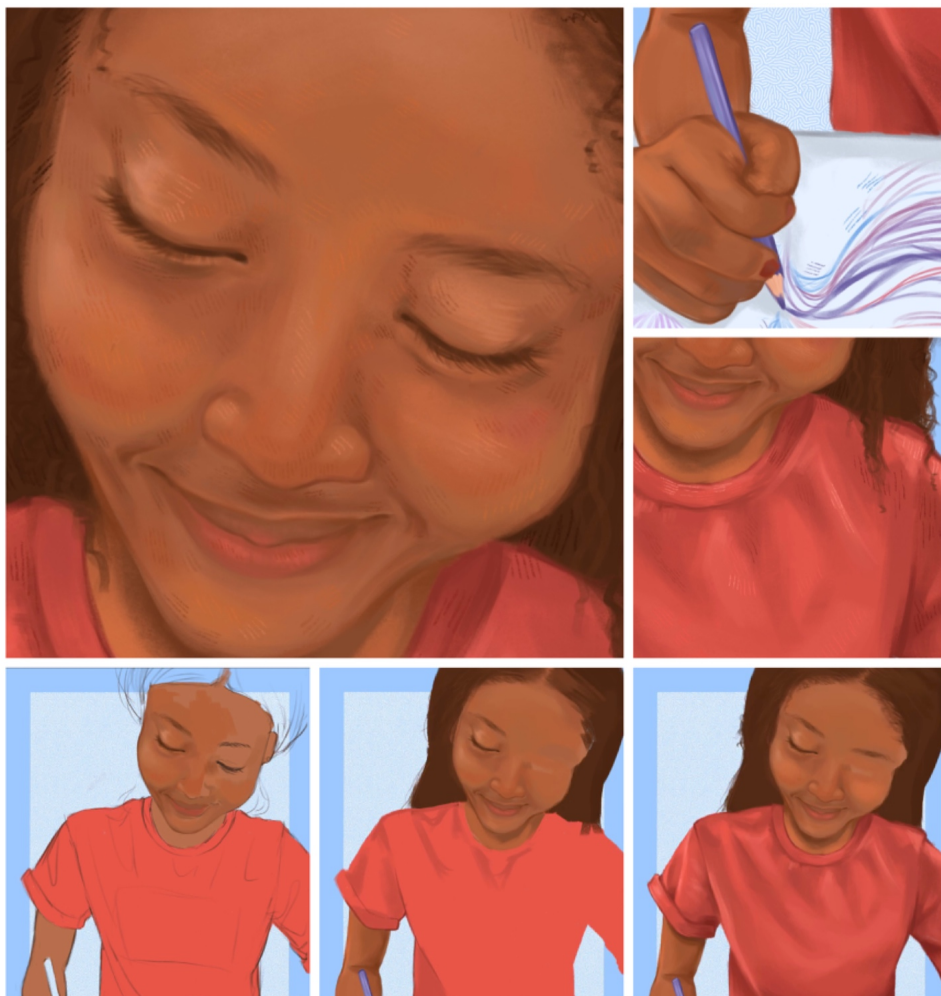


Image 14

Sustained Investigation

Height: N/A

Width: N/A

Depth: N/A

Materials:

iPad, Apple Pencil, Procreate Drawing Program

Process(es):

Focused shadows to show way fabric drapes, detailing lines on face and hand to show expression.

Citation(s): N/A

Portraiture

in the theme of girlhood? a heightened understanding of contemporary media

★ common themes:

- dreamers, aspirations, multi-faceted
 - empathy, caring, beauty in the unique, a struggle to be understood
- FLIP IT — all positive lights with intensity! but first, inspiration.



sisterhood, strength in community, yearning, comp: simple pleasures & joys.

fragmented id., motherhood, strife, communication (flap IT) → + joy in being a mother, finding yourself, caring for others.



MEDIA reference

★ "Little Women"

★ "Anne of Green Gables"

★ Hurricane Summer

★ "Everything Everywhere All At Once"

COMPOSITION

in elements of intensity (emotionally), frames ground feminine subjects in their own plane.



Rendering

clean, yet soft and evanescence to familiarize subj. color and lines applied on above layers to heighten realism



COLORS

color in reflection of femininity are bright and warm...



comp./refl light in skin

Image 15

Sustained Investigation

Height: N/A

Width: N/A

Depth: N/A

Materials:

iPad, Apple Pencil, Procreate Drawing Program

Process(es):

Used comprehensive spread of materials from elements of media to inform my artistic process.

Citation(s): N/A



Work 1

Selected Works

Height: 48

Width: 36

Depth: 2

Idea(s):

Against a dissolving background, a feminine symbol evokes confidence with gold as a marker of power.

Materials:

Blick acrylic paints, hand-stretched canvas

Process(es):

Unsaturated underpainting and highly concentrated colors painting from light to dark.

Citation(s):

Poison, Positive. "Positive poison aesthetic." 2024, positivepoisonn.com



Work 2

Selected Works

Height: 18

Width: 24

Depth: 1

Idea(s):

Encapsulated young girl's budding passion for caretaking to emphasize her unique experience.

Materials:

iPad, Apple Pencil, Procreate Drawing Program

Process(es):

Highly rendered the visual through usage of complementary colors on a blissful expression.

Citation(s): N/A



Work 3

Selected Works

Height: 18

Width: 24

Depth: 1

Idea(s):

Shows transcendent relationship of mother and child with allusions to feminine touch with detail.

Materials:

iPad, Apple Pencil, Procreate Drawing Program

Process(es):

Consistent in soft rendering and saturated colors on lips, experimenting in alternate perspectives.

Citation(s):

Bannister, Constance. "Mother holding sleeping baby." 11 November 2009.



Work 4

Selected Works

Height: 18

Width: 24

Depth: 1

Idea(s):

Figure is amidst a moment of pride and achievement to show a keystone moment in girls' lives.

Materials:

iPad, Apple Pencil, Procreate Drawing Program

Process(es):

Soft errant lines with previous consistent framing, adding texture on the subject with pencil.

Citation(s): N/A



Work 5

Selected Works

Height: 18

Width: 24

Depth: 1

Idea(s):

Trying cosmetics for the first time, the subject is experiencing joy and confidence as a young girl.

Materials:

iPad, Apple Pencil, Procreate Drawing Program

Process(es):

Reduced value of facial features to draw focus on the emotional aspect and saturation of colors.

Citation(s): N/A