

AP Drawing Portfolio

Christie Wu

2022

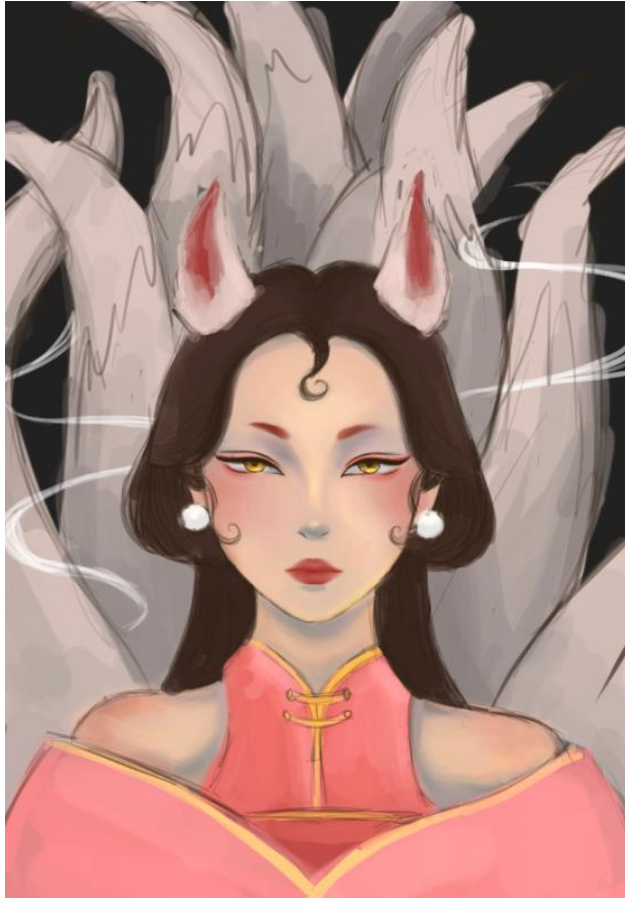


Image 1

Sustained Investigation

Height: 11 inches

Width: 8 inches

Material(s): -Procreate

Process(es): Digital exploration of character design aspect of the Nine-tail Fox in the Chinese urban legends.



Image 2

Sustained Investigation

Height: 11 inches

Width: 8.5 inches

Material(s): -Watercolors

Process(es): Continued exploration of character design and overall composition of the Nine-tail fox



Image 3

Sustained Investigation

Height: 8.5 inches

Width: 11 inches

Material(s): -Watercolors

Process(es): Continued exploration and revision of the composition for the Nine-tail Fox using thumbnails.



Image 4

Sustained Investigation

Height: 16 inches

Width: 22 inches

Material(s): -Watercolors
-Gouache

Process(es): Final selected work for Nine-tail fox using the composition from the thumbnail.

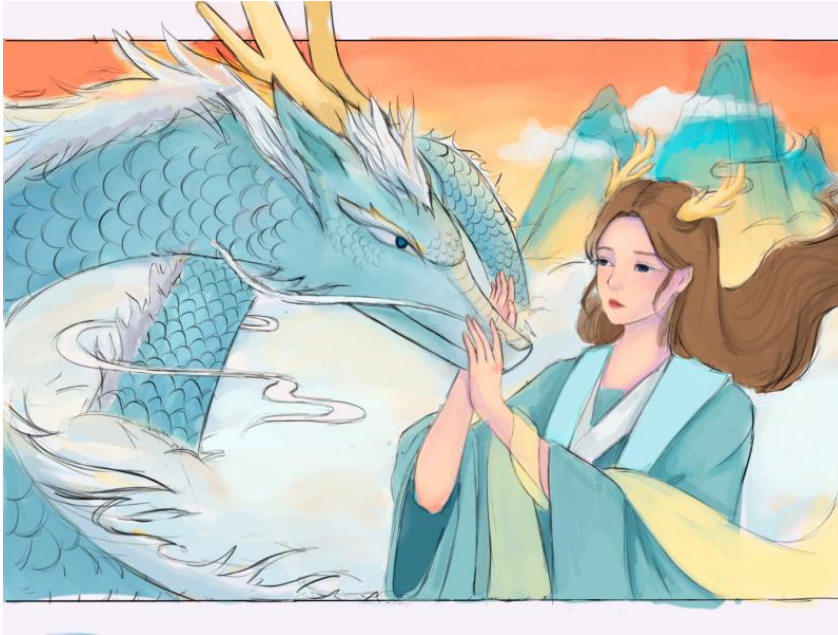


Image 5

Sustained Investigation

Height: 8.5 inches

Width: 11 inches

Material(s): -Procreate

Process(es): Exploration of character design and overall composition of the dragon humanoid.



Image 6

Sustained Investigation

Height: 16 inches

Width: 22 inches

Material(s): -Watercolor
-Gouache

Process(es): Final work of the dragon girl using a revised composition and color scheme of digital draft.

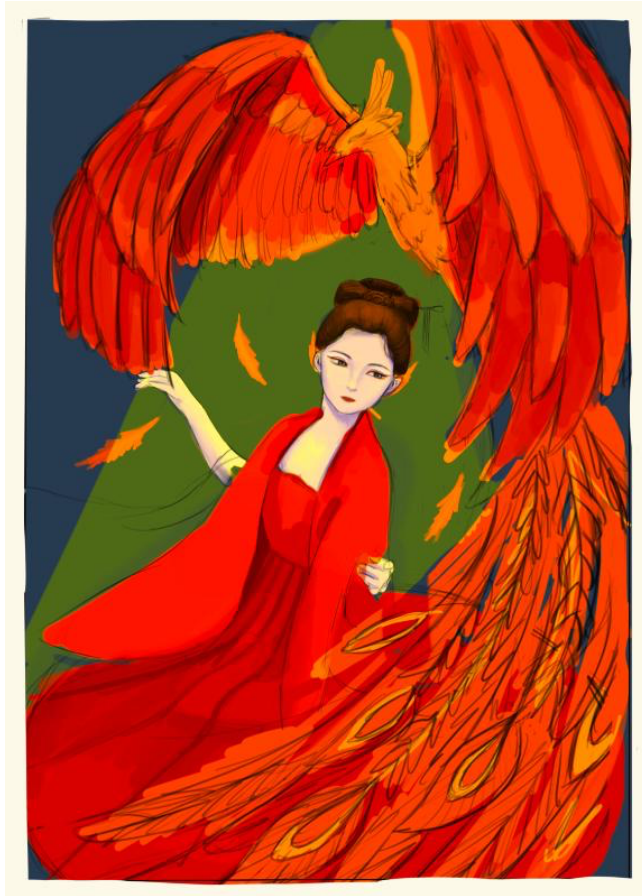


Image 7

Sustained Investigation

Height: 11 inches

Width: 8.5 inches

Material(s): -Procreate

Process(es): Exploration of character design and the overall composition of the Phoenix humanoid.



Image 8

Sustained Investigation

Height: 22 inches

Width: 16 inches

Material(s): -Watercolor
-Gouache
-Gold leaf

Process(es): Final artwork of Phoenix humanoid in traditional mediums, using revised composition and design



Image 9

Sustained Investigation

Height: 11 inches

Width: 8.5 inches

Material(s): -Procreate

Process(es): Exploration of initial character design and composition of the white and green snake humanoids.



Image 10

Sustained Investigation

Height: 11 inches

Width: 8.5 inches

Material(s): - Procreate

Process(es): Revised pose and anatomy of the white and green snake humanoids.

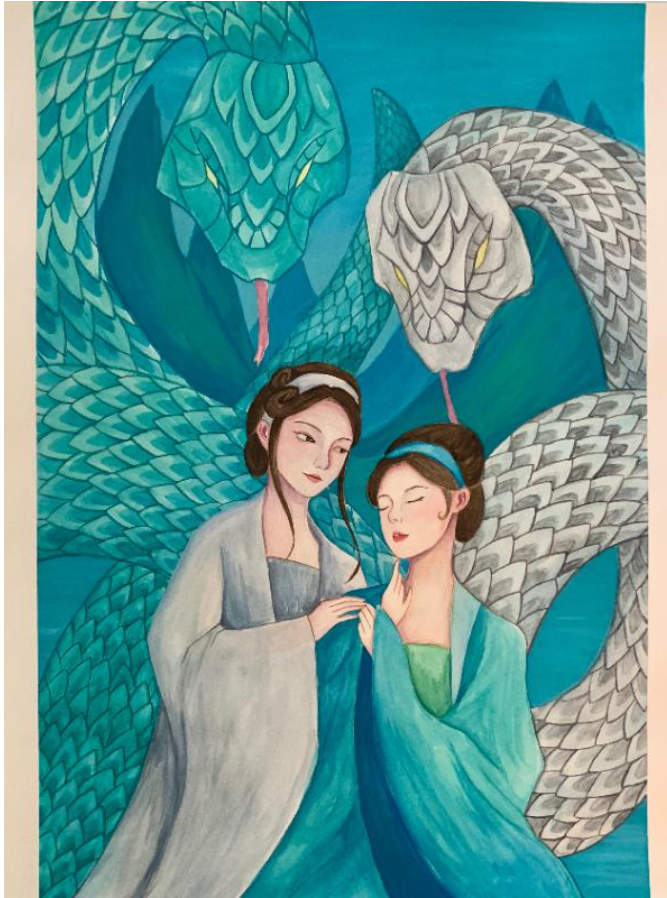


Image 11

Sustained Investigation

Height: 22 inches

Width: 16 inches

Material(s): -Watercolor
-Gouache

Process(es): Final artwork of the white and green snake in traditional mediums, using revised composition.

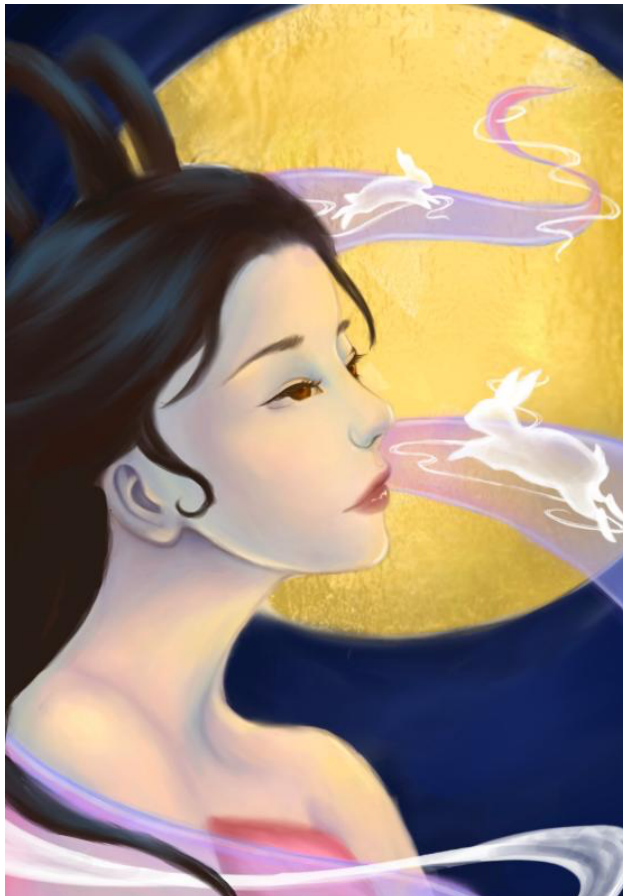


Image 12

Sustained Investigation

Height: 11 inches

Width: 8.5 inches

Material(s): - Procreate

Process(es): Initial digital exploration of character design for the moon goddess.

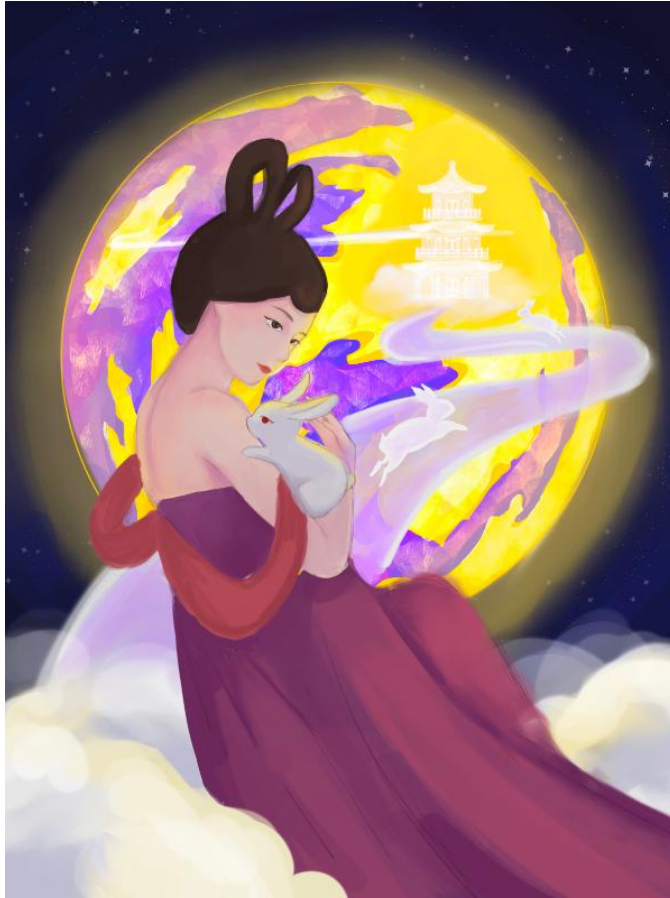


Image 13

Sustained Investigation

Height: 11 inches

Width: 8.5 inches

Material(s): - Procreate

Process(es): Continued digital exploration and revision of the moon goddess and overall composition.



Image 14

Sustained Investigation

Height: 8.5 inches

Width: 11 inches

Material(s): - Procreate

Process(es): Continued digital exploration and revision of the moon goddess and overall composition.



Image 15

Sustained Investigation

Height: 16 inches

Width: 22 inches

Material(s): -Watercolor
-Gouache

Process(es): Final piece of the moon goddess in traditional mediums using revised composition.

Written Evidence

Sustained Investigation

1. Identify the question(s) or inquiry that guided your sustained investigation.

2. Describe how your sustained investigation shows evidence of practice, experimentation, and revision guided by your question(s) or inquiry.

Response 1:

How does one's imaginations engage with those of the ancient within the Chinese culture and assimilate the fictional into reality?

Response 2:

I initiated the investigation by exploring and revising the character and composition of each piece, either in a sketchbook or digitally, until desired. Next, I transferred the sketch onto a watercolor paper, where I experimented and practiced new techniques with traditional mediums such as watercolor and gouache and further utilized aspects of the medium, like the translucency or the opaqueness, to establish movement and rhythm. Ultimately, with the constant revision of the compositions, color, anatomy, etc, I was able to simultaneously create a balanced, yet dynamic and symbolic artwork.



Work 1

Selected Works

Height: 16 inches

Width: 22 inches

Idea(s): Final selected work for Nine-tail fox using the composition from the thumbnail.

Material(s): -Watercolor
-Gouache

Process(es): Used different revised sketches and thumbnails to develop final selected work with new mediums.



Work 2

Selected Works

Height: 16 inches

Width: 22 inches

Idea(s): Final selected work for the dragon humanoid using the revised digital sketch.

Material(s): -Watercolor
-Gouache
- Gold leaf

Process(es): Used revised digital sketch to develop final selected work using traditional mediums.



Work 3

Selected Works

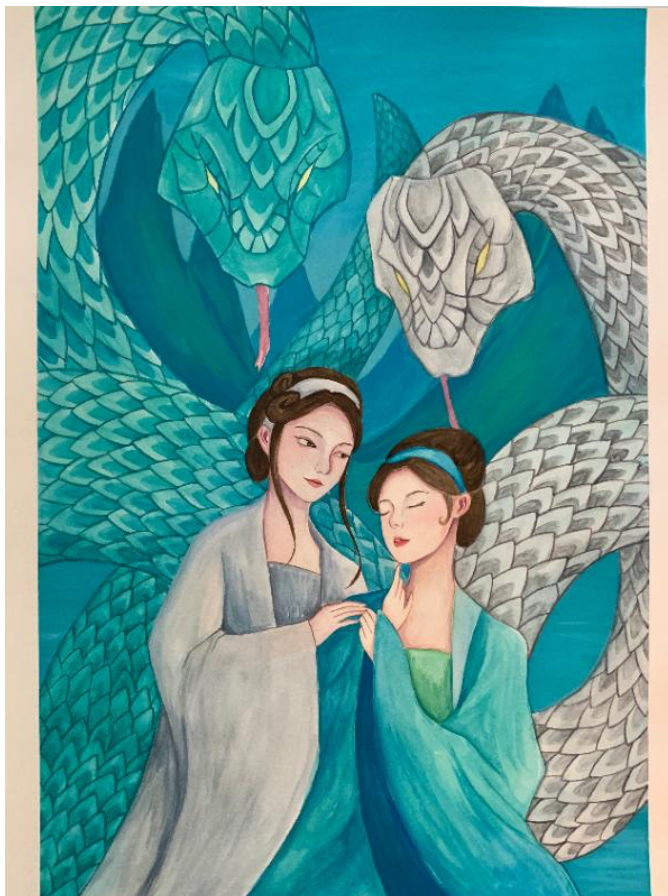
Height: 22 inches

Width: 16 inches

Idea(s): Final selected work for the Phoenix humanoid using revised composition of the digital sketch.

Material(s): -Watercolor
-Gouache
- Gold leaf

Process(es): Used revised digital sketch to develop final selected work using traditional mediums.



Work 4

Selected Works

Height: 22 inches

Width: 16 inches

Idea(s): Final work of the white and green snake humanoids associated with the Legend of the White Snakes.

Material(s): -Watercolor
-Gouache

Process(es): Used revised digital sketch to develop final selected work using traditional mediums.



Work 5

Selected Works

Height: 16 inches

Width: 22 inches

Idea(s): Selected work of the Chinese Moon Goddess with the revised digital sketch.

Material(s): -Watercolor
-Gouache
- Gold leaf

Process(es): Used revised digital sketch to develop final selected work using traditional mediums.