



# **AP Drawing Portfolio**

Anna Blankenship

9UX00Z88

2024

# Written Evidence

## Sustained Investigation

Identify the inquiry that guided your sustained investigation.

Response:

How can I use brush strokes to represent the people most important to me as a whole? In what ways can I experiment with color to represent the subject's personality and meaning in a way that reflects my interpretations of the person? How can I display humans while forcing the viewer to focus not on the minute physical features but on the colors that make up the figure's personality through my eyes? These questions guide my version of the traits associated with colors with broad and bold brush strokes to translate the personalities of those who impact the fabrication of who I am.

Describe ways your sustained investigation developed through practice, experimentation, and revision.

Response:

By displaying candid and representative images of an intimate moment, I fully capture the personalities of those most important to me by using a specific color palette. Colors, such as green, represent growth and nurturing, while pink shows youthfulness and a lively persona. The extensive brush strokes allow the viewer to see individual colors used throughout the image to make a whole figure. The acrylic paintings' intensity shows the memory in immense light. The background pushes the figure back while simultaneously bringing it forward transcending an unspoken moment of tender understanding.



# Image 1

Sustained Investigation

Height: 40

Width: 30

Depth: N/A

Materials:

Acrylic on canvas, a variety of brushes and palette knives

Process(es):

An underpainting of orange was the base, then overlayed with broad brush strokes of the figure.

Citation(s): N/A



## Image 2

Sustained Investigation

Height: N/A

Width: N/A

Depth: N/A

Materials:

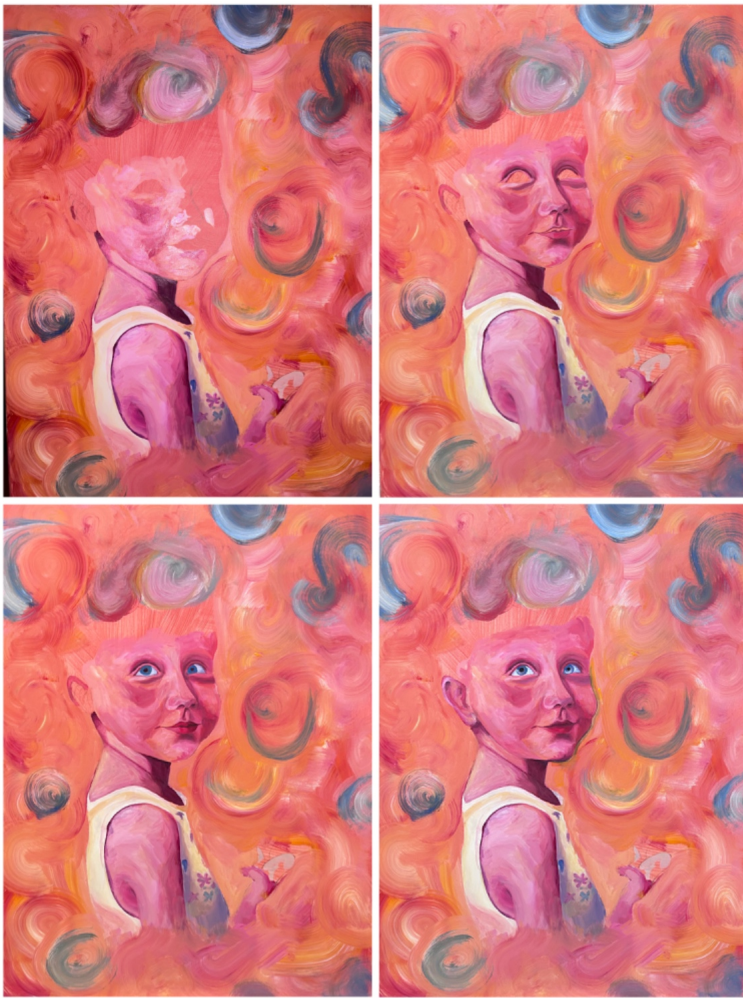
Acrylic on canvas, a variety of brushes and palette knives

Process(es):

Starting with the arms, then moving onto the face with a smaller brush to make more focused marks.

Citation(s): N/A





## Image 3

Sustained Investigation

Height: N/A

Width: N/A

Depth: N/A

Materials:

Acrylic on canvas, a variety of brushes and palette knives

Process(es):

The background used a large brush in sweeping motions and a fan brush to finally create the hair.

Citation(s): N/A



## Image 4

Sustained Investigation

Height: 40

Width: 30

Depth: N/A

Materials:

Acrylic on canvas, a variety of brushes and palette knives

Process(es):

Blue was used as an underpainting and a base for the background, which was followed by large marks.

Citation(s): N/A



## Image 5

Sustained Investigation

Height: N/A

Width: N/A

Depth: N/A

Materials:

Acrylic on canvas, a variety of brushes and palette knives

Process(es):

The general marks created the face, which were then narrowed down with a smaller brush for details.

Citation(s): N/A





## Image 6

Sustained Investigation

Height: N/A

Width: N/A

Depth: N/A

Materials:

Acrylic on canvas, a variety of brushes and palette knives

Process(es):

The hair had large marks with varying tones, overlayed with a palette knife to finish the piece.

Citation(s): N/A



## Image 7

Sustained Investigation

Height: 30

Width: 40

Depth: N/A

Materials:

Acrylic on canvas, a variety of brushes and palette knives

Process(es):

Magenta was used as an underpainting, followed by broad brush marks to frame the figures' faces.

Citation(s): N/A



## Image 8

Sustained Investigation

Height: N/A

Width: N/A

Depth: N/A

Materials:

Acrylic on canvas, a variety of brushes  
and palette knives

Process(es):

Using fine brush, the details of the  
mouth, eyes, and nose were defined  
with more detailed marks.

Citation(s): N/A





## Image 9

Sustained Investigation

Height: N/A

Width: N/A

Depth: N/A

Materials:

Acrylic on canvas, a variety of brushes and palette knives

Process(es):

The hair consisted of wide marks and different tones; the background was finished by a palette knife

Citation(s): N/A



## Image 10

Sustained Investigation

Height: 48

Width: 36

Depth: N/A

Materials:

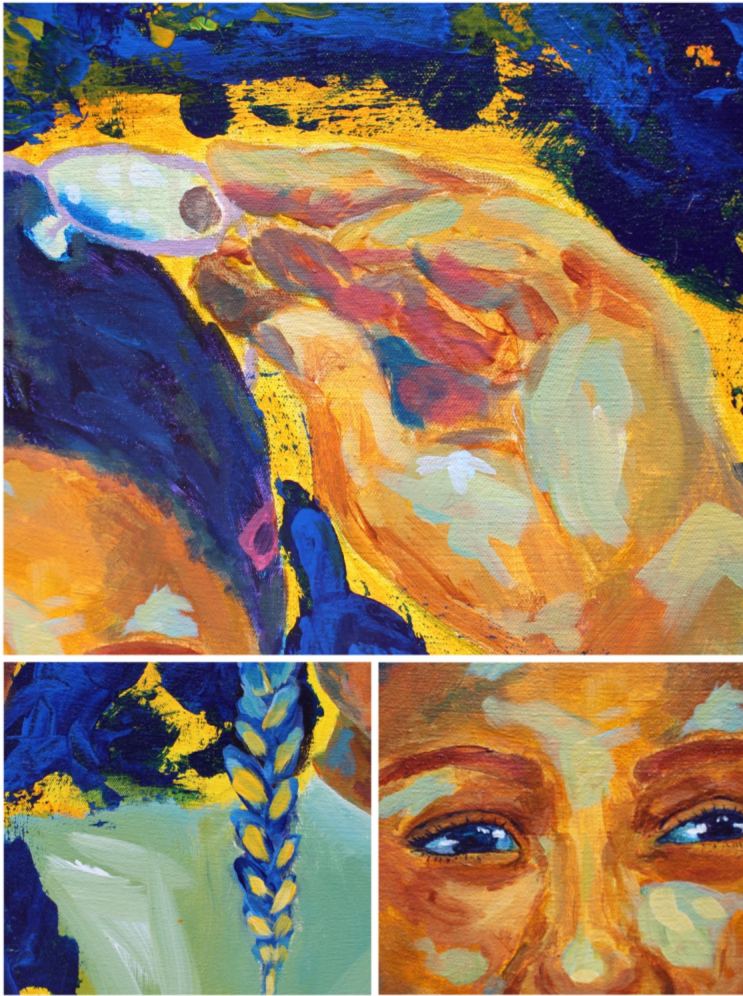
Acrylic on canvas, a variety of brushes  
and palette knives

Process(es):

Underwash of brown to depict highlights  
and shadows. A palette knife framed the  
background first.

Citation(s): N/A





## Image 11

Sustained Investigation

Height: N/A

Width: N/A

Depth: N/A

Materials:

Acrylic on canvas, a variety of brushes and palette knives

Process(es):

The arms and face were framed with large brush strokes then the shirt. After, details with colors.

Citation(s): N/A



## Image 12

Sustained Investigation

Height: N/A

Width: N/A

Depth: N/A

Materials:

Acrylic on canvas, a variety of brushes and palette knives

Process(es):

Small brushes completed the face and a palette knife was used to overlay the background ontop.

Citation(s): N/A



## Image 13

Sustained Investigation

Height: 40

Width: 30

Depth: N/A

Materials:

Acrylic on canvas, a variety of brushes  
and palette knives

Process(es):

Orange was used as a base, the purple  
placed ontop by a palette knife in a  
variety of marks.

Citation(s): N/A





## Image 14

Sustained Investigation

Height: N/A

Width: N/A

Depth: N/A

Materials:

Acrylic on canvas, a variety of brushes and palette knives

Process(es):

General marks shaped the face and neck then smaller brushes to define the details of the figure.

Citation(s): N/A





## Image 15

Sustained Investigation

Height: N/A

Width: N/A

Depth: N/A

Materials:

Acrylic on canvas, a variety of brushes  
and palette knives

Process(es):

The hair used large marks and different  
tones. A palette knife completed the  
piece with purple on top

Citation(s): N/A



# Work 1

Selected Works

Height: 40

Width: 30

Depth: 0

Idea(s):

Color shows youth, joy, and loyalty of the figure and broad marks to emphasize the personality shown

Materials:

Acrylic on canvas, a variety of brushes and palette knives

Process(es):

Acrylic wash with broad marks overlayed that narrows down to more details on the face.

Citation(s): N/A



## Work 2

### Selected Works

Height: 40

Width: 30

Depth: 0

Idea(s):

Colors show my view of the figure's personality: joy, trustworthiness, and happiness.

Materials:

Acrylic on canvas, a variety of brushes and palette knives

Process(es):

Acrylic wash and palette knife with broad brush strokes on the figure that becomes more detailed.

Citation(s): N/A





## Work 3

Selected Works

Height: 48

Width: 36

Depth: 0

Idea(s):

Figure's personality is shown by my interpretation of color's meaning: joy, loyalty, and importance.

Materials:

Acrylic on canvas, a variety of brushes and palette knives

Process(es):

Acrylic wash with a palette knife on top; broad brush strokes narrow down on the face for details.

Citation(s): N/A



## Work 4

Selected Works

Height: 40

Width: 20

Depth: 0

Idea(s):

The saturated skin and defined brush strokes show the warmth and liveliness of the figure.

Materials:

Acrylic base on canvas with oil paint overlay, a variety of brushes

Process(es):

Acrylic wash; large brush strokes and detailed with smaller brushes for detailed areas; oil for hair

Citation(s):

<https://medium.com/alenadelena/what-i-learned-from-my-photostudy-f5a568418093>



## Work 5

Selected Works

Height: 40

Width: 30

Depth: 0

Idea(s):

My view of a color's meaning is translated onto a personality to represent the figure's impact on me

Materials:

Acrylic on canvas, a variety of brushes and palette knives

Process(es):

Acrylic wash with broad brush strokes on the figure to detail on features; palette knife overlay.

Citation(s): N/A