

2-D Art and Design Portfolio

Yasmine Williams

V2Y5U66Y

2023



Work 1

Sustained Investigation

Height: n/a

Width: n/a

Materials:

sketchbook paper and scissors to create
initial collage and then re-sketched on
Procreate

Process(es):

sketched the Taj Mahal on paper then
Procreate, and then rearranged each
section to form a cityscape



Work 2

Sustained Investigation

Height: 6

Width: 6

Materials:

sketches from image 1, arabic scriptures
on the entrance of the Taj Mahal,
rendered on Procreate

Process(es):

used a pixel-by-pixel method for
precision and symmetry, colored with
warm colors related to love



Work 3

Sustained Investigation

Height: n/a

Width: n/a

Materials:

sketchbook paper, photo from my moms
2002 visit to Germany, detailed sketch
on Procreate

Process(es):

sketched the Hamburg Rathaus using
diagonal grid then resketched on
Procreate focusing on precision



Work 4

Sustained Investigation

Height: 4

Width: 5

Materials:

used sketch from image 3, rendered fully on Procreate, emphasizing even and consistent line art

Process(es):

began in grayscale, then colored using copper and pops of viridigris which remind my mom of Germany



Work 5

Sustained Investigation

Height: n/a

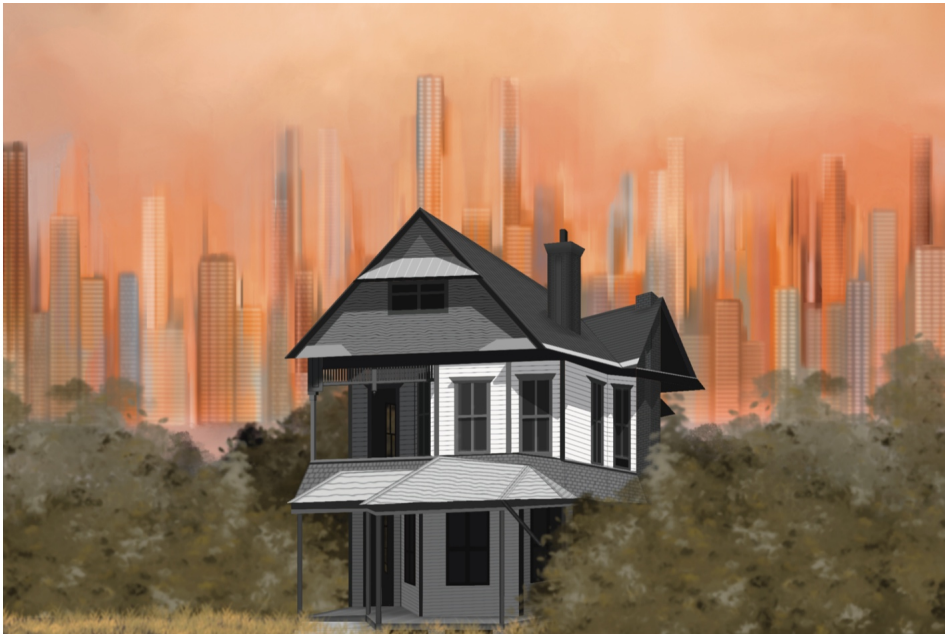
Width: n/a

Materials:

local Masters (golf) magazine, which is a prestigious event where I live, scissors and Procreate

Process(es):

made a rough collage on paper and then blended it on Procreate until it resembled buildings



Work 6

Sustained Investigation

Height: 4

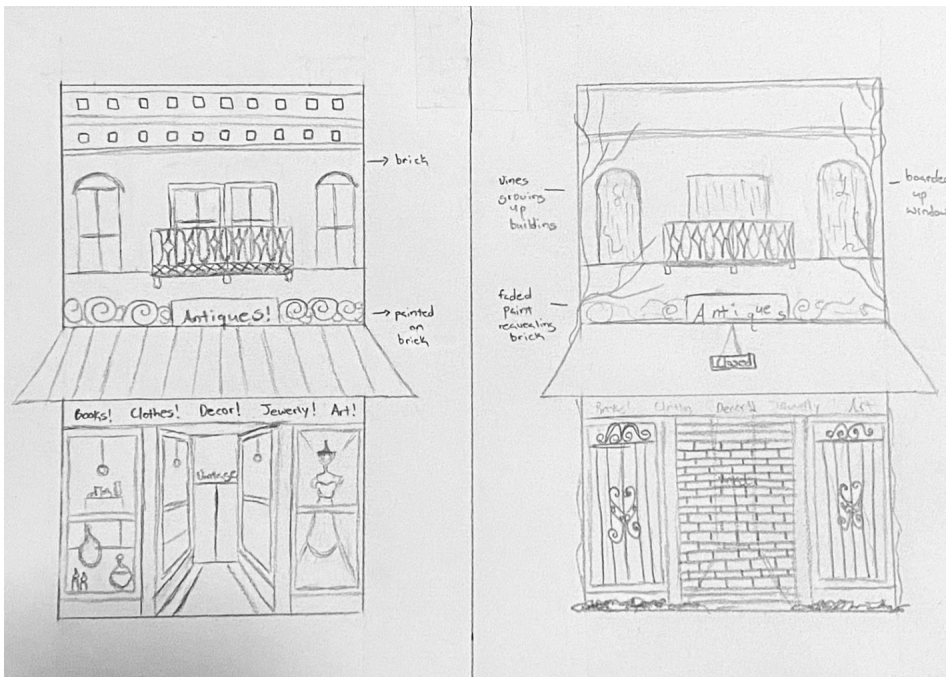
Width: 6

Materials:

reference of local home built in 1900,
Masters magazine, collage from image
5, Procreate

Process(es):

added detail to the collage, rendered the
building in grayscale, added trees to
further isolate home



Work 7

Sustained Investigation

Height: n/a

Width: n/a

Materials:

references from various shops in local downtown area, sketched reoccurring features on paper

Process(es):

sketched two versions of a building, one new and one old, and took notes on traits I saw locally

Work 8

Sustained Investigation

Height: 7

Width: 5

Materials:

used sketch from image 7 and then rendered fully on Procreate

Process(es):

did line art using pixel-by-pixel method for symmetry, used vivid colors to appear new and well-kept



Work 9

Sustained Investigation

Height: 7

Width: 5

Materials:

used sketch from image 7 and then rendered fully on Procreate

Process(es):

same as image 8 except I used dull colors and added natural-growth to show aging and neglect





Work 10

Sustained Investigation

Height: 4

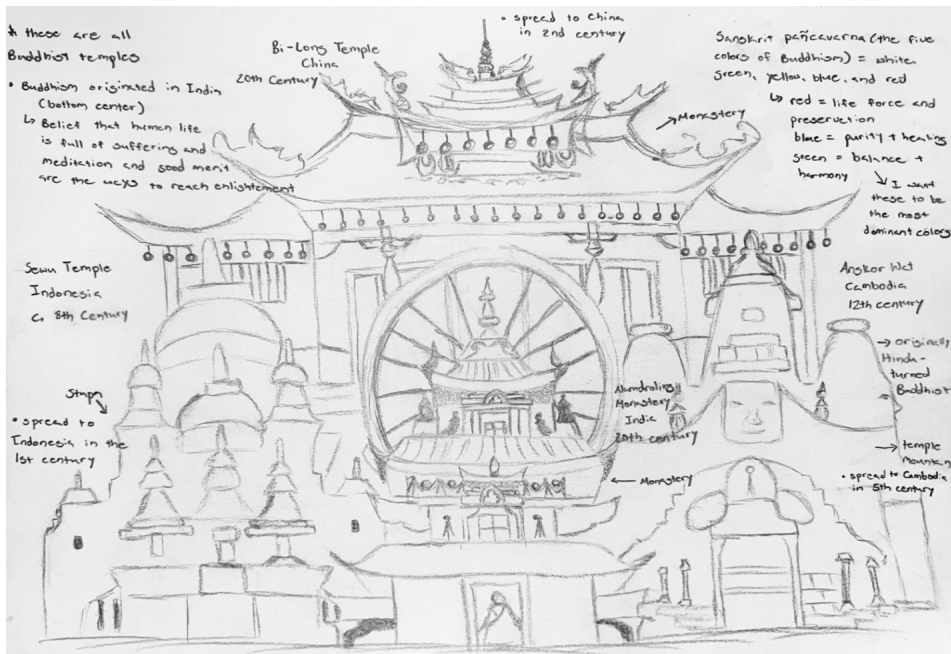
Width: 10

Materials:

used Procreate to render both sides of the building and then Adobe After Effects to make 3D model

Process(es):

combined images 8 and 9 to show the contrast between a business in its prime vs. when it depreciates



Work 11

Sustained Investigation

Height: n/a

Width: n/a

Materials:

digital collage of 4 different buddhist temples from 4 different countries, sketched on paper

Process(es):

sketched each temple/monastery, then researched/took notes for better preparation for final piece



Work 12

Sustained Investigation

Height: 4

Width: 6

Materials:

sketch from image 11, painted fully on Procreate and used its text feature to identify each temple

Process(es):

painted each temple to match reference while using colors symbolizing buddhism (green, yellow, red)



Work 13

Sustained Investigation

Height: n/a

Width: n/a

Materials:

2 references of a local building taken months apart, one before reconstruction had begun, Procreate

Process(es):

used these two references to plan out image 15, noted things I wanted to do/change to make the piece

Work 14

Sustained Investigation

Height: n/a

Width: n/a

Materials:

reference from image 13, sketched and fully rendered the building on Procreate

Process(es):

painted the building before reconstruction, adding more vibrancy to exaggerate how it's boarded up





Work 15

Sustained Investigation

Height: 4

Width: 5

Materials:

painting from image 14 and references from image 13 to make the background and then collage

Process(es):

some sticky notes show the blueprint process while others compare the remodeling to the painting

Written Evidence

Sustained Investigation

Identify the question(s) or inquiry that guided your sustained investigation.

Response:

How do time and location affect architecture? To answer this, my works show how architectural styles vary around the world, despite being created for/with similar intentions, while also analyzing how time influences the visual aspect of architecture and its impact on the purpose of architecture. My works show how factors such as environment, human care, and demographic variance determine how much a building is worth and can degrade. Along with that, my works explore how color can influence one's perception of architecture and the emotions that can be associated with such infrastructure.

Describe how your sustained investigation shows evidence of practice, experimentation, and revision guided by your question(s) or inquiry.

Response:

To start my process, I find references of either renowned or local architecture, and then I collage and/or edit them together, recomposing them in original and meaningful ways. Next, I would make my sketch on paper, and then render my piece fully on Procreate. Depending on my goal with a specific piece, I used techniques focusing on perfection and precision, such as drawing pixel by pixel, to create works that mimic the goals of architects (i.e. images 2/4) or works that highly contrast architects by being more stylized/surrealistic through my use of collage or painting (i.e. images 6/12).



Work 1

Selected Works

Height: 6

Width: 6

Idea(s):

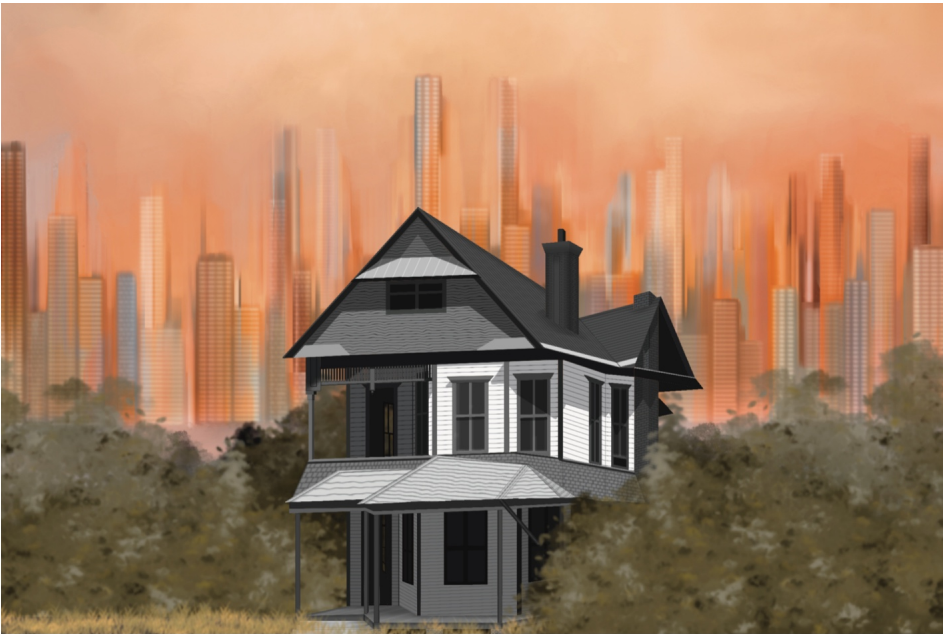
shows how Taj Mahal features (i.e. height/shape) can resemble modern cityscapes despite its vast age

Materials:

collaged/rearranged Taj Mahal on paper, Arabic scriptures to add silhouette, rendered on Procreate

Process(es):

used a pixel-by-pixel method for precision and symmetry, colored with warm colors related to love



Work 2

Selected Works

Height: 4

Width: 6

Idea(s):

show how easily unrenowned works become outdated/isolated and how exteriors affect where people live

Materials:

reference of local home, collage of Masters magazine to make buildings and tie to prestige of city

Process(es):

used Procreate, home is in grayscale to show its isolation compared to the vibrant city behind it

Work 3

Selected Works

Height: 6

Width: 8

Idea(s):

shows how appearance and success
affect one another + the effects of
proper human care vs. neglect

Materials:

references from various shops in local
downtown area, using traits I saw most
often for each version

Process(es):

line art using pixel-by-pixel method for
symmetry, using color to emphasize the
differences in time





Work 4

Selected Works

Height: 4

Width: 6

Idea(s):

show the differences between buildings
all created with the similar purpose of
worshiping Buddha

Materials:

sketched collage on paper, painted fully
on Procreate, used text feature to
identify each temple

Process(es):

painted each temple to match reference
while using colors symbolizing
buddhism (green, yellow, red)



Work 5

Selected Works

Height: 4

Width: 5

Idea(s):

show a building in its many stages/display that its prime is not lost forever as it can be remodeled

Materials:

reference of a local building before (background) and after (collage) it had begun reconstruction

Process(es):

painted pre-reconstruction on Procreate, used "stick-notes" to show blueprint + its present form